

Santa Catalina Island



LEGEND

General

- TCT Mile Marker
- Peak
- Campground
- Trailhead
- Boat-In Campground
- Cross-Island Fence
- Avalon City Limits
- Trans Catalina Trail
- Intermittent Stream
- Property Boundary

Road & Trail Types

- Paved Road: Biking/Hiking
- Dirt Road: Biking/Hiking
- Dirt Road: Hiking Only
- Singletrack Hiking Trail
- Closed to Public
- Distance in Miles

Amenities

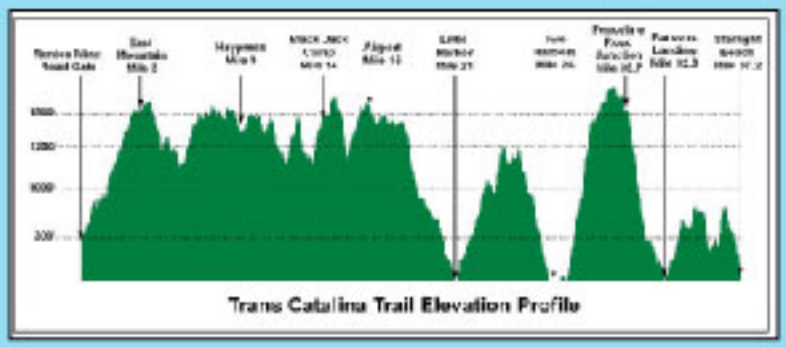
- Restroom
- Potable Water
- Telephone
- Food
- Outdoor Shower

GPS Waypoints

A	33° 20' 14.951" N 118° 18' 52.339" W	D	33° 20' 22.673" N 118° 25' 1.980" W	G	33° 25' 30.203" N 118° 27' 21.138" W
B	33° 19' 47.927" N 118° 21' 16.714" W	E	33° 24' 29.165" N 118° 25' 54.122" W	H	33° 25' 40.388" N 118° 28' 44.200" W
C	33° 21' 39.887" N 118° 22' 29.590" W	F	33° 24' 36.747" N 118° 28' 3.263" W	I	33° 27' 17.457" N 118° 33' 14.624" W

* Not open to the public without land owner or tenant permission

PACIFIC OCEAN

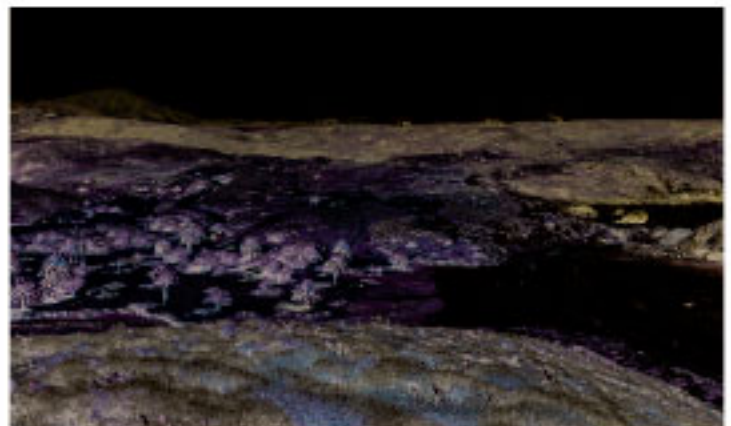


CATALINA ISLAND

CAMPGROUND & TRAIL MAP



ROUTES	Distance in Miles	Grade %	Road - Dirt	Road - Slurry
Avalon to East Summit	3.2	10		✓
East Summit to Middle Ranch Jct.	2.0	0-5		✓
Middle Ranch Jct. to Black Jack Jct.	2.7	0-5		✓
Black Jack Jct. to Airport	2.5	0-5		✓
Airport to Little Harbor Overlook	5.8	10	✓	
Middle Ranch Jct. to Middle Ranch	4.8	0-10	✓	
Middle Ranch to Ben Weston Jct.	2.4	10	✓	
Ben Weston Jct. to Little Harbor Overlook	2.3	10	✓	
Little Harbor Overlook to Little Harbor	1.2	5-10	✓	
Little Harbor to West Summit	4.3	5-10	✓	
West Summit to Two Harbors	2.5	10	✓	
Two Harbors to Parsons Landing	6.8	0-5	✓	
Black Jack Jct. to Black Jack	1.5	5-10	✓	
Trans-Catalina Trail	37.2	0-10	✓	



CAMPGROUND SERVICES	Toilets	Fire Rings	BBQ pits	Public Phones
Hermit Gulch	✓	✓	✓	✓
Black Jack	✓	✓	✓	
Little Harbor	✓	✓	✓	✓
Two Harbors	✓	✓	✓	✓
Parson's Landing	✓	✓	✓	

More Info:

CATALINA HAS FIVE CAMPGROUNDS, four in the interior (*outside of Avalon*) and one in Avalon, and a scattering of sites reachable only by boat. The interior campgrounds are each placed in a unique setting that takes advantage of the island's geography and views, from its highest point to sea level. Equipment is available for rent. Fees for camping are assessed per person rather than per site.

CAMPING PERMITS

All sites require permits and have restrictions designed to protect the settings. Camping permits are issued upon check-in at Two Harbors Visitor Services or in Avalon, at Hermit Gulch Campground or the Island Tour Plaza.

Book online at VisitCatalinaIsland.com or by calling 310.510.8368. A \$9.25 transaction fee is charged.

TWO HARBORS

Located on a bluff above the isthmus with its own beach. Regular tent camping and tent cabins; 42 individual sites and three group areas. Rangers rent equipment and sell firewood, charcoal and propane. Access: short hike from the pier.

BLACK JACK CAMPGROUND

Near the island's highest peak, 2,097-foot Mount Orizaba. Eleven campsites with views of rolling terrain. Access: hiking, airport shuttle, safari bus.

PARSONS LANDING

Secluded beach camping seven miles west of Two Harbors. Eight primitive campsites accommodate up to 6 people each. Access: moderately difficult hike or kayak trip.

LITTLE HARBOR

Sandy, beachfront campground with 23 sites nestled around an idyllic harbor. Access: Safari Bus or hiking the Trans-Catalina Trail. (*Kayak, snorkel rentals offered by Wet Spot*).

HERMIT GULCH CAMPGROUND

Tree-shaded setting in Avalon with fresh water, rentals and other services. Each of Hermit Gulch's 43 sites has a picnic table and fire ring. Tent camping and tent cabins. Located on Avalon Canyon Road a mile from downtown Avalon. Access: walking, taxi or trolley.

BOAT-IN

Seventeen primitive sites at nine locations. Campers must pack in all their own equipment and supplies. Access: sites can only be reached by boat or kayak.

BAGGAGE GUIDELINES

Catalina Express vessels have limited space for baggage. Pack efficiently; only two bags are allowed per person (weight maximum 50lbs. each), plus a carry-on (*maximum dimensions 23"x23"x37"*).

CAMPERS will be allowed to transport a sleeping bag as an extra piece of luggage.

- Plan to pack efficiently.
- Keep ice chest sizes to 60 quarts or lower.
- To keep your ice chest under 50lbs., pack only perishable items.
- Empty out water from melted ice from the ice chest.
- Use duct tape, not bungee cords (*bungee cords can get snagged and become dangerous*).

- Straps and snaps on backpacks should be snapped together and fastened. No canteens, tennis shoes, loose items tied to exterior of backpacks.
- Bundle beach chairs together.
- No four-wheel carts or wagons.
- No hoverboards.

The U.S. Coast Guard prohibits the following items aboard the vessels: Camp stoves and lanterns (*except electric or when propane or butane canisters are removed*), fuel canisters (*propane, butane, white gas*), charcoal, cots, firewood, gasoline, kerosene, outboard motors, flammables.

DIVERS will be allowed one extra piece of luggage and one Dive Tank (*Two-tank rig with a fixed manifold is counted as one tank*).

- We recommend a "tank strap with the handle hold" for your carrying convenience.
- Medium Size Stanley Box is acceptable. The largest Stanley or Husky Box must be kept under 50lbs. and, although within the dimensions, be able to be stored on end if necessary.
- Two wheel dollies are acceptable to assist transporting luggage. Two 50lbs. luggage bags can be placed on the two wheel dolly, each luggage can be no larger than 23"x23"x37" and weighing no more than 50lbs. Total weight on the dolly cannot exceed 100lbs.
- No four-wheel carts or wagons.
- Consider Soft Dive Bags with wheels.
- Weight belts may take your luggage over the 50lbs. maximum and **MUST** be carried aboard. Use a weight bag or wear the weights. We recommend the soft weights.
- We recommend a back pack for your most important items i.e. log book, computers, mask, regulator which can be carried aboard.
- **Consider gear rentals from on-island dive suppliers to keep your load light.**

EXTRA LUGGAGE? OVERSIZED OR OVERWEIGHT?

Send it to the island via one of Catalina's freight services.

Avalon Freight Services, located at Berth 95 in San Pedro, is easily accessible from freeways and close proximity to passenger arrivals and departures to Catalina via ferry or helicopter. 310.221.6290

AvalonFreightServices.com

Catalina Flying Boats will deliver "same day" to your hotel or campsite in Avalon or Two Harbors. 562.595.5026

CatalinaFlyingBoats.com



QUESTIONS? Contact our passenger services representative at 310.519.7971 or mail@catalinaexpress.com